



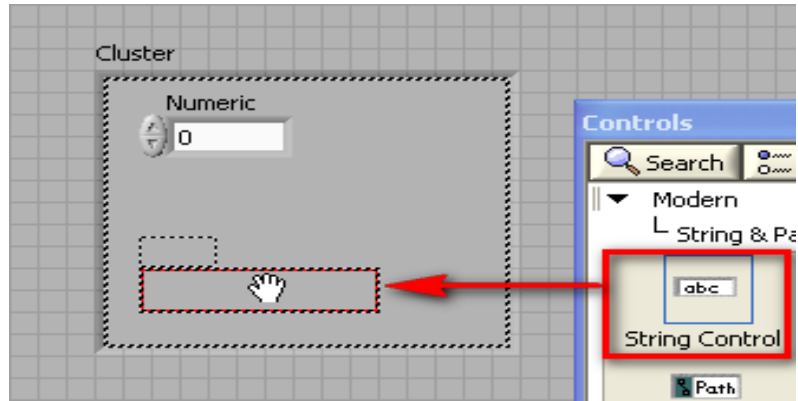
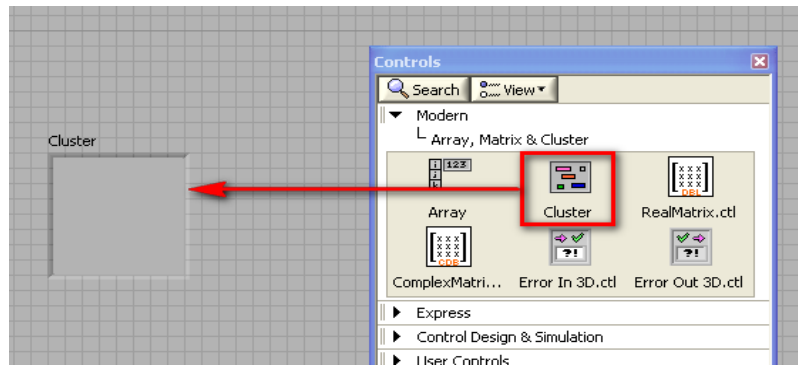
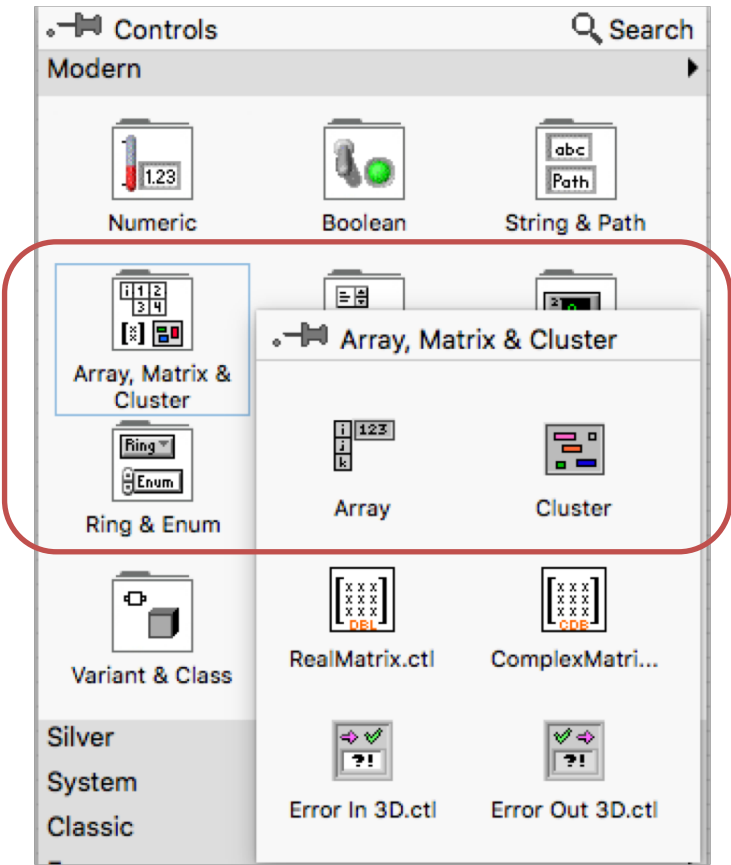
LabVIEW Clusters

Hans-Petter Halvorsen, M.Sc.

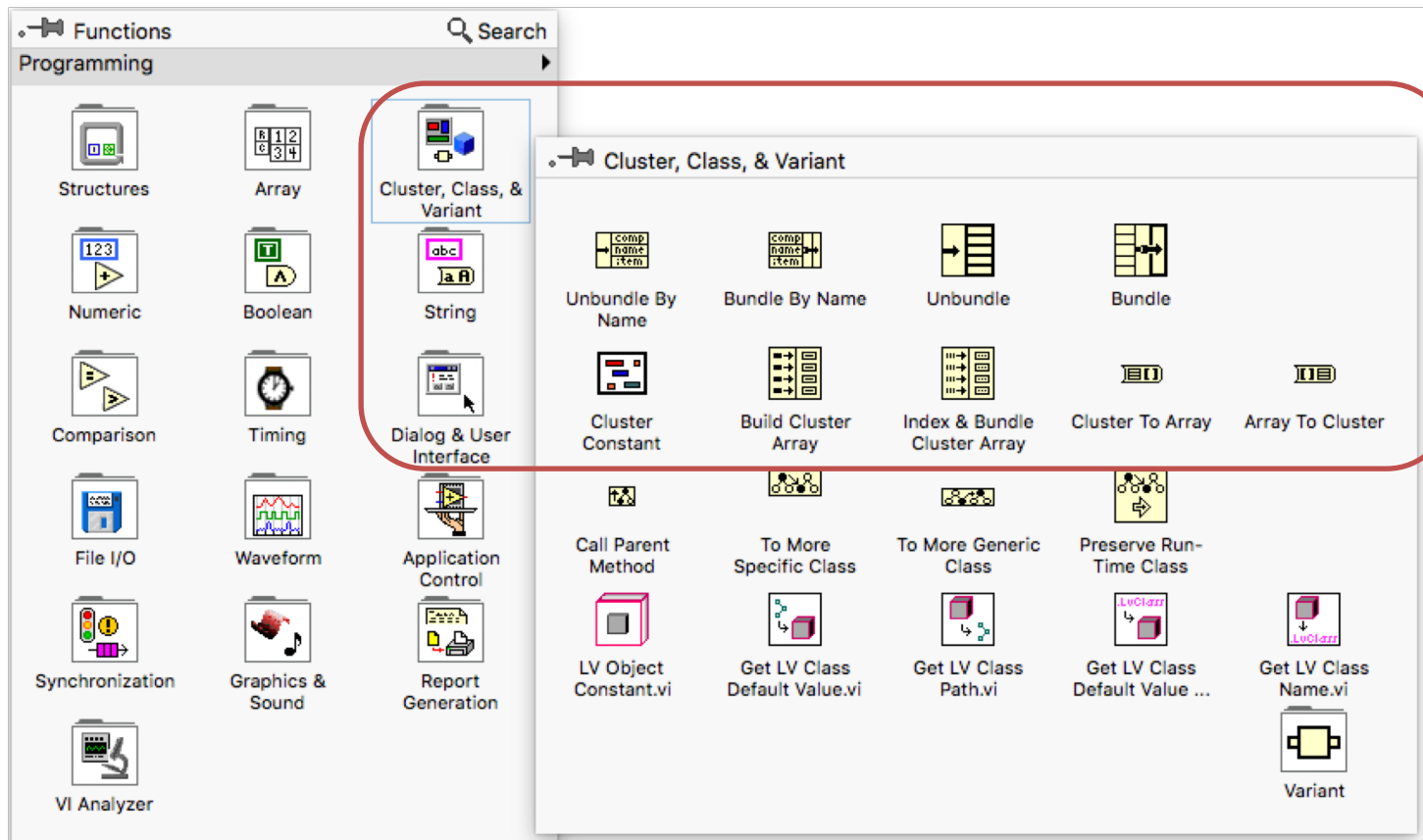
LabVIEW Clusters

- Clusters grouped data elements of mixed types, and handy to use when you want to structure your data into a manageable package.
- It's similar to “struct” or “record” (or a “miniature” class) used in other programming languages.

Cluster Control



Clusters Functions



Clusters Functions - Unbundle

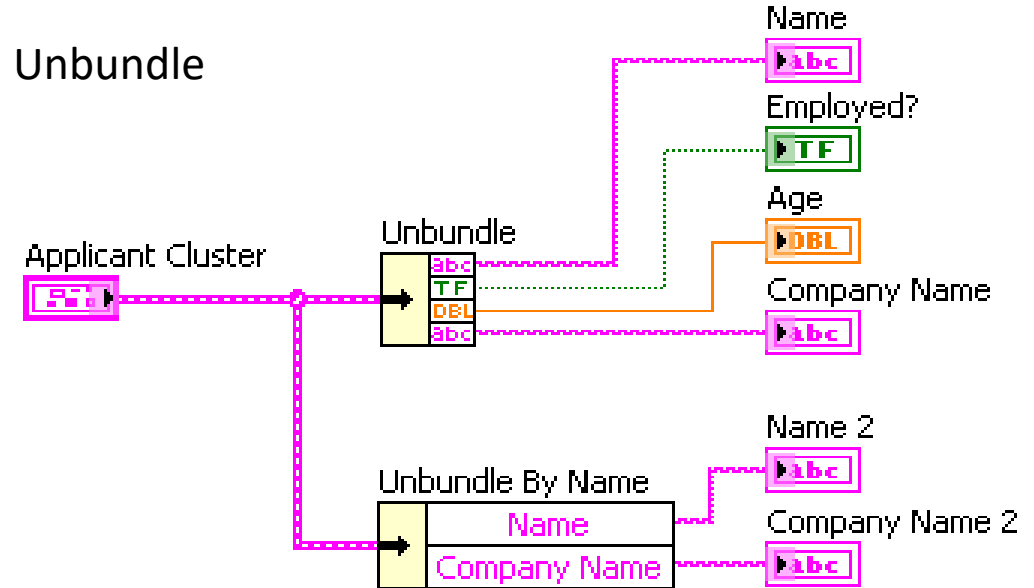
Applicant Cluster

Name Age

Employed? Yes No

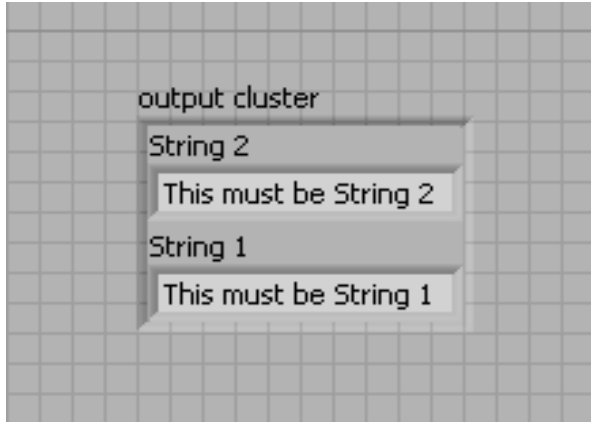
Company Name

Unbundle

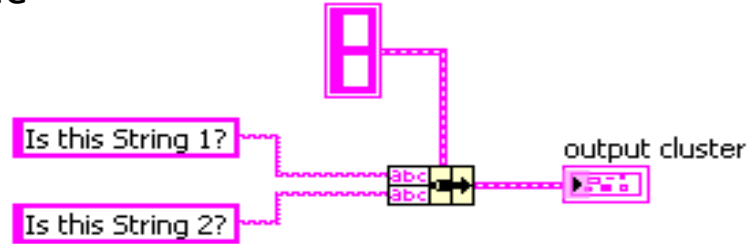


Unbundle by Name

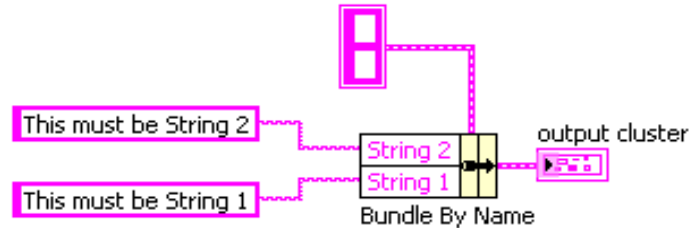
Clusters Functions - Bundle



Bundle

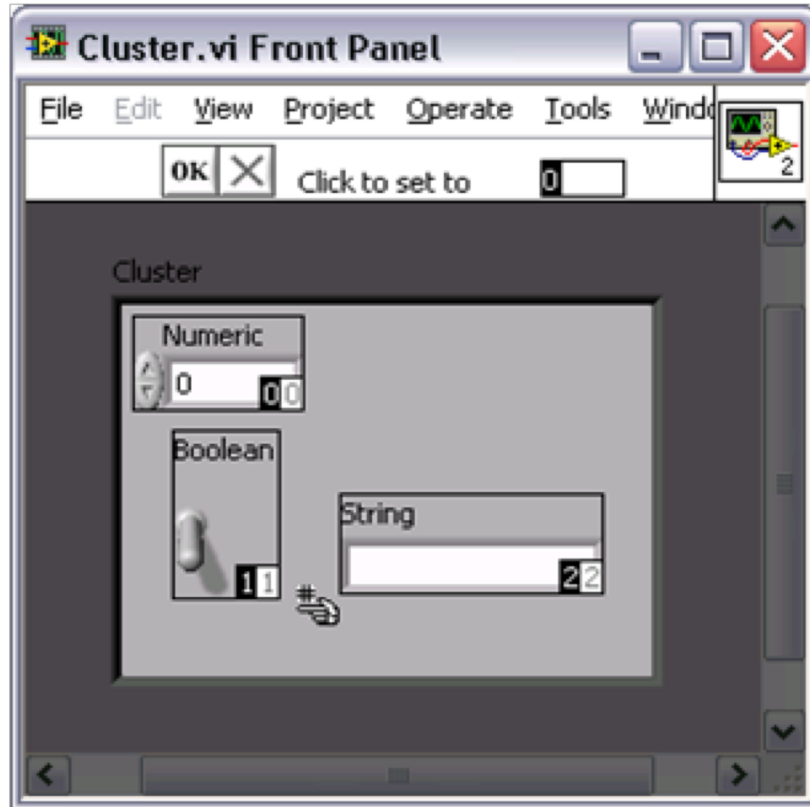


Bundle By Name:

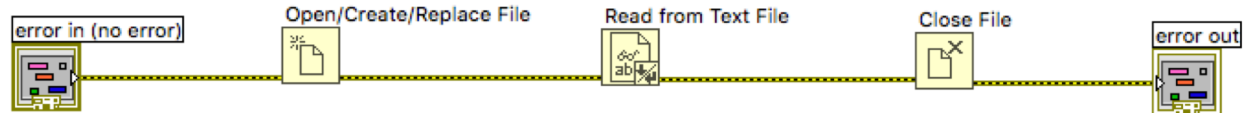
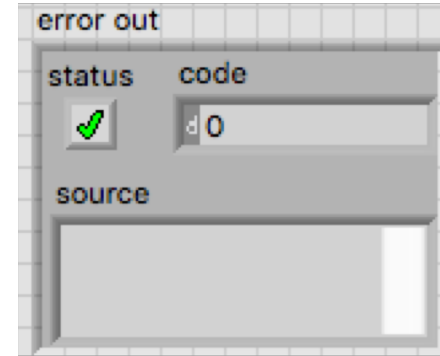
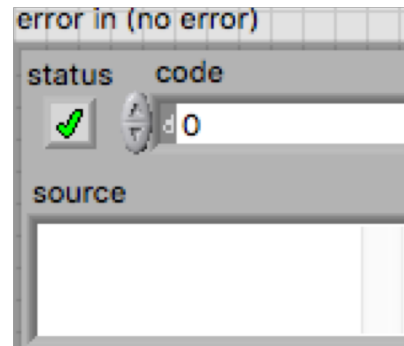
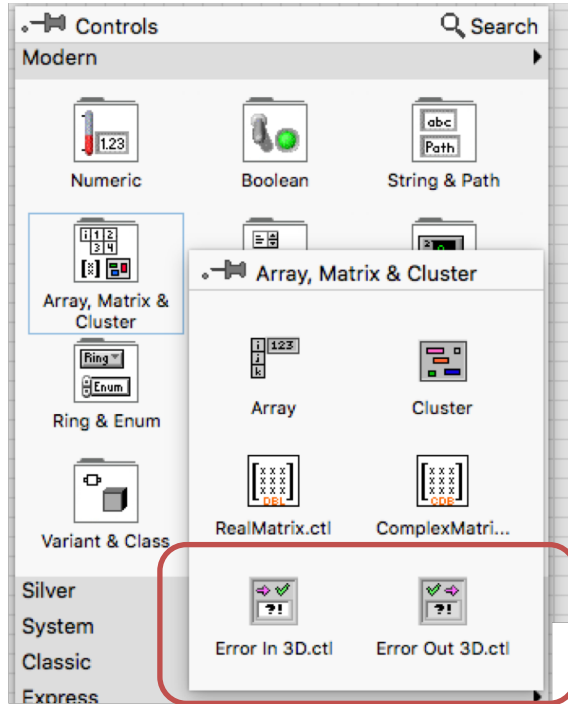


DEMO

Cluster Order



LabVIEW Error Clusters



Hans-Petter Halvorsen

University of South-Eastern Norway

www.usn.no

E-mail: hans.p.halvorsen@usn.no

Web: <https://www.halvorsen.blog>

